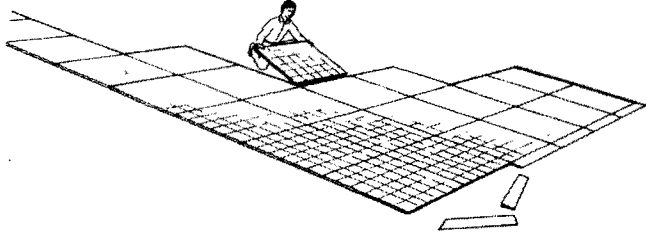


4' x 4'

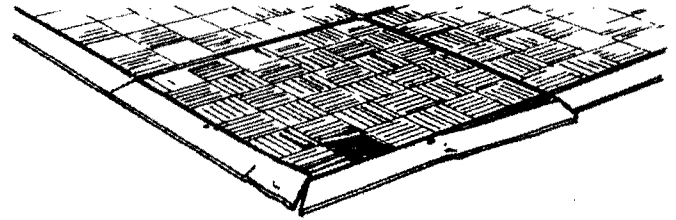
PLEASE POST FOR YOUR FACILITY'S STAFF TO READ SET YOUR DANCE FLOOR SAFELY

READ THE OPERATING INSTRUCTIONS SHIPPED WITH YOUR DANCE FLOOR*



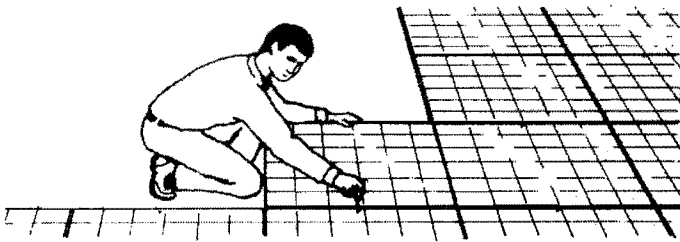
1. SET UP SUFFICIENT PANELS

Use enough panels so guests are not crowded. Set dance floor on a level surface.



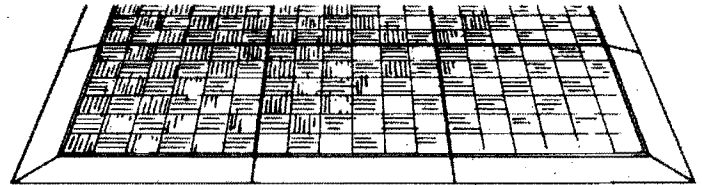
2. DO NOT USE DAMAGED FLOOR PANELS & TRIM

Remove from service any panels that are damaged or do not securely lock together.

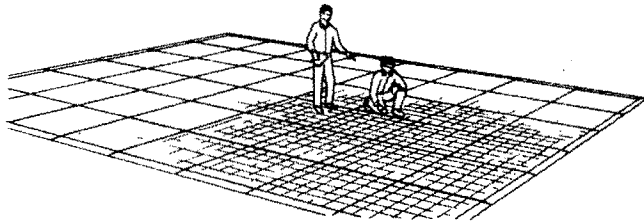


3. TIGHTEN LOCKS SECURELY

There should be no gaps or holes between panels and/or trim.

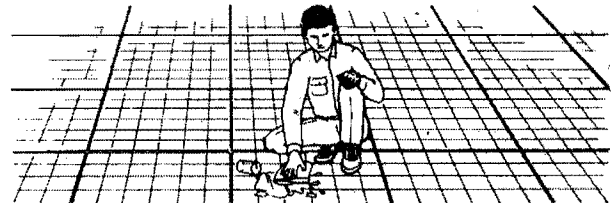


4. INSTALL TRIM ON ALL SIDES OF DANCE FLOOR

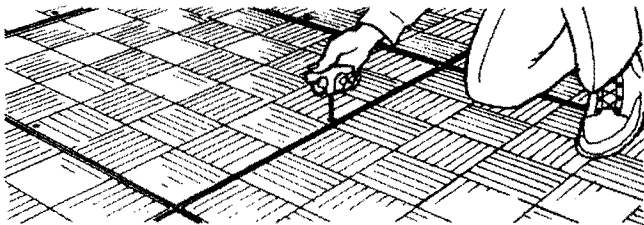


5. INSPECT FLOOR BEFORE GUESTS ARRIVE

Make sure all panels and trim are properly connected and the entire surface is clean.

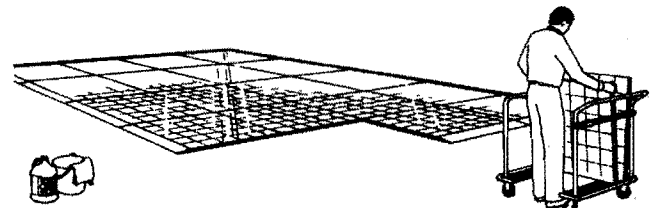


6. CLEAN UP SPILLED FOOD AND DRINKS IMMEDIATELY



7. RE-TIGHTEN LOCKS AFTER EACH USE

When a dance floor is left down for future events, locks should be re-checked before use.



8. CLEAN FLOOR SURFACE BEFORE TAKING APART

Read maintenance instructions shipped with your dance floor.*

9. KEEP ROOM BRIGHTLY LIT.

10. DO NOT MIX DANCE FLOORS OF DIFFERENT MANUFACTURERS.